



CATALOG 2010-2011



117 WASHINGTON AVENUE
NORTH HAVEN, CONNECTICUT 06473
(203) 234-1116
www.learn2groom.com



**EXCLUSIVE
MOBILE GROOMING
TRAINING
PAGE 7**



A MESSAGE FROM OUR DIRECTOR



WE ARE PLEASED TO HEAR OF YOUR INTEREST IN THE FINE ART OF DOG GROOMING. THIS IS AN EXCITING TIME IN THE ANIMAL CARE INDUSTRY; MORE JOB OPPORTUNITIES ARE AVAILABLE TODAY THAN EVER BEFORE. YOU CAN TURN YOUR LOVE OF ANIMALS INTO A LIFE-LONG PROFESSION, WORKING WITH PEOPLE WHO SHARE YOUR LOVE AND CONCERN. YOUR NEW SKILLS WILL BE WELL RESPECTED, AND YOU WILL ACHIEVE GREAT SATISFACTION IN FORGING A CAREER FROM YOUR LOVE AND ENJOYMENT OF ANIMALS. MANY OF OUR GRADUATES ARE EARNING FROM \$50,000.00 TO \$100,000.00 ANNUALLY, SOME, WITHIN 1 YEAR OF STARTING SCHOOL. THE SKY IS THE LIMIT FOR HARD WORKING, TALENTED PEOPLE.

THE CHOICE YOU WILL MAKE IN SELECTING A SCHOOL IS AN IMPORTANT ONE. SOME SCHOOLS ARE AN OUTGROWTH OF EXISTING GROOMING FACILITIES. OTHERS ARE A SMALL PART OF A LARGE ANIMAL TRAINING PROGRAM. OUR SCHOOL IS 100 % DESIGNED AND DEDICATED TO TEACHING THE SKILLS REQUIRED TO ENTER THE DOG GROOMING PROFESSION. THIS IS OUR ONLY MISSION. OUR CAREER PROGRAM, IS SO INTENSE AND ALL-INCLUSIVE, IT WILL SURPASS THE ADVANCED PROGRAMS OFFERED AT OTHER SCHOOLS. OUR HANDS-ON APPROACH WILL HAVE YOU BATHING AND GROOMING DOGS, RIGHT FROM THE BEGINNING. OUR CLASSES ARE INTENTIONALLY SMALL, (LIMITED TO 6 STUDENTS), SO THAT YOU WILL RECEIVE THE INDIVIDUAL ATTENTION REQUIRED TO SUCCESSFULLY ACHIEVE YOUR GOALS. OUR EXCLUSIVE, "MOBILE INTERNSHIP", PROGRAM WILL INTRODUCE YOU TO THE NEW AND EXCITING FIELD OF MOBILE GROOMING. YOU MAY ELECT TO SPEND UP TO 20% OF YOUR HOURS GROOMING DOGS AND CATS IN OUR WAG-N-TAILS VAN, "THE DOGFATHER". YOUR INSTRUCTOR WILL BE JENNY AURORA, FORMER DIRECTOR OF NEW YORK SCHOOL OF DOG GROOMING. JENNY IS WELL KNOWN AND RESPECTED IN THE DOG GROOMING INDUSTRY. SHE TRAINED UNDER SAM KOHL, AUTHOR OF "THE ALL BREED DOG GROOMING GUIDE". COUNTLESS NUMBERS OF HER STUDENTS HAVE GONE ON TO SUCCESSFUL CAREERS AS GROOMERS AND BUSINESS OWNERS. YOU WILL ALSO RECEIVE INSTRUCTION FROM JENNIFER EAST, (CLASSROOM INSTRUCTOR), AND MATT HARWOOD, (MOBILE INSTRUCTOR). JENNY AURORA IS THE OWNER, DIRECTOR, AND PRESIDENT OF THE CONNECTICUT SCHOOL OF DOG GROOMING.

PLEASE REVIEW THE ENCLOSED MATERIAL AND, IF YOU LIKE, SCHEDULE AN APPOINTMENT TO VISIT OUR FACILITY. WE RECOMMEND VISITING ANY SCHOOL IN WHICH YOU ARE INTERESTED. JENNY WILL BE HAPPY TO GIVE YOU A PRIVATE TOUR OF THE SCHOOL AND ANSWER ANY QUESTIONS YOU MAY HAVE. YOU WILL VISIT US WHILE CLASS IS UNDERWAY SO THAT YOU WILL EXPERIENCE THE RELAXED ATMOSPHERE. YOU MAY SPEAK WITH STUDENTS AND ASK QUESTIONS. IN THE MEANTIME, PLEASE FEEL FREE TO CALL THE SCHOOL ANYTIME; JUST ASK TO SPEAK WITH JENNY.

BY CONTACTING US, YOU HAVE ALREADY TAKEN THE FIRST STEP TOWARD YOUR SUCCESS. WE LOOK FORWARD TO HEARING FROM YOU SOON.

LIVE YOUR DREAM !

STUCK IN A RUT ? COME WITH US AND LEARN TO CUT. START A NEW CAREER TODAY IN THE EXCITING WORLD OF DOG GROOMING. DO WHAT YOU HAVE ALWAYS WANTED TO DO AND ENJOY A REWARDING CAREER WORKING WITH DOGS. INCLUDED IN THE 200 HOUR **CAREER DOG GROOMING PROGRAM**, OUR EXCLUSIVE **MOBILE GROOMING INTERNSHIP**, (PAGE 7), WILL OFFER YOU OPPORTUNITIES NOT AVAILABLE AT ANY OTHER SCHOOL. IN AS LITTLE AS 6 WEEKS, YOU CAN BE TRAINED AND READY TO BEGIN A REWARDING AND LUCRATIVE CAREER IN:

« **YOUR OWN MOBILE GROOMING BUSINESS**

« **YOUR OWN GROOMING SHOP**

« **VETERINARY HOSPITALS**

« **GROOMING SALONS**

« **MOBILE GROOMING VANS**

« **MOBILE GROOMING TRAILERS**

« **ANIMAL SHELTERS**

« **PET SHOPS**

« **OTHER START-UPS AVAILABLE**

« **HOME GROOMING**

« **DOGGIE DAY-CARE & GROOMING**

« **DO-IT-YOURSELF WASH-N-GROOM**

« **BOARDING KENNELS & GROOMING**

« **APPROVED FOR VETERANS UNDER THE GI BILL**

« **APPROVED NY STUDENTS TUITION PAYMENT UNDER VESID**

« **APPROVED MA STUDENTS SECT 30 DEPT UNEMPLOYMENT**

« **APPROVED FOR FINANCIAL AID UNDER CONNECTICUT**

UNEMPLOYMENT WORKFORCE ALLIANCE



JOB PLACEMENT ASSISTANCE

ALL STUDENTS AND GRADUATES MAY RECEIVE LIFETIME JOB PLACEMENT ASSISTANCE. HOWEVER, JOB PLACEMENT CANNOT BE GUARANTEED.

COURSE WITHDRAWAL/REFUND POLICY

IF A STUDENT WITHDRAWS WITHIN THE FIRST 2 CLASSES, TUITION WILL BE REFUNDED ON A PRO RATA BASIS WITH THE EXCEPTION OF THE \$200.00 REGISTRATION FEE & COST FOR BOOKS AND SUPPLIES. THEREAFTER, THERE IS NO REFUND. REFUND POLICIES APPLY TO TERMINATION CAUSED BY THE STUDENT (WITHDRAWAL) OR THE SCHOOL (DISMISSAL). IF A STUDENT WISHES TO WITHDRAW FROM THE PROGRAM, THE STUDENT SHOULD PROVIDE NOTICE. WITHDRAWAL IS BASED ON THE LAST VERIFIABLE DATE OF ATTENDANCE. FULL REFUNDS, (EXCEPT FOR BOOKS & EQUIPMENT), WILL BE MADE FOR COURSES CANCELLED PRIOR TO THE BEGINNING OF CLASSES. IF WITHDRAWAL IS MADE BEFORE THE START OF THE FIRST CLASS, ALL MONIES PAID IN EXCESS OF \$200.00 REGISTRATION FEE WILL BE REFUNDED. REFUNDS WILL BE MADE WITHIN 30 DAYS FROM THE LAST DATE OF ATTENDANCE. IF A STUDENT WITHDRAWS AFTER 2 CLASSES, NO REFUND IS DUE. BOOKS AND EQUIPMENT: ONCE RECEIVED BY THE STUDENT, BOOKS AND EQUIPMENT ARE THE PROPERTY OF THE STUDENT AND THERE ARE NO REFUNDS. STUDENTS MAY MAKE COMPLAINTS AGAINST THE SCHOOL. ALL COMPLAINTS MUST BE IN WRITTEN FORM, SIGNED & FILED WITH THE SCHOOL OWNER. A SCHOOL REPRESENTATIVE WILL MEET WITH THE STUDENT WITHIN 10 DAYS. IF THE COMPLAINT CANNOT BE RESOLVED WITHIN 10 DAYS, THE STUDENT MAY CONTACT THE CONNECTICUT DEPT OF HIGHER EDUCATION, 61 WOODLAND ST, HARTFORD, CONNECTICUT 06105 (860)947-1816. VA VETERANS PRO-RATA REFUND POLICY CAN BE FOUND IN THE "CATALOG ADDENDUM FOR VA VETERAN STUDENTS. HIGHER EDUCATION, 61 WOODLAND ST, HARTFORD, CONNECTICUT 06105 (860)947-1816. VA VETERANS PRO-RATA REFUND POLICY CAN BE FOUND IN THE "CATALOG ADDENDUM FOR VA VETERAN STUDENTS.

SCHOOL OBJECTIVES

SUCCESS IS OUR GOAL FOR EACH STUDENT. WE OFFER THE OPPORTUNITY FOR EACH STUDENT TO GAIN A SOLID FOUNDATION OF KNOWLEDGE AND SKILL TO BECOME MARKETABLE AS A VALUED MEMBER OF THE GROOMING FIELD.

ADMISSION REQUIREMENTS

APPLICANTS MUST BE AT LEAST 16 YEARS OF AGE AND MUST SPEAK AND UNDERSTAND ENGLISH. HIGH SCHOOL DIPLOMA IS NOT REQUIRED. INSTRUCTION AT THE CONNECTICUT SCHOOL OF DOG GROOMING CANNOT BE USED IN LIEU OF COMPULSORY EDUCATION. CREDIT FOR PREVIOUS INSTRUCTION OR EMPLOYMENT CAN BE GRANTED AT THE DISCRETION OF THE DIRECTOR.

DESCRIPTION OF FACILITY

WE ARE LOCATED AT 117 WASHINGTON AVENUE IN NORTH HAVEN. WE HAVE A STOREFRONT IN THE NORTH HAVEN SHOPPING CENTER. NORTH HAVEN IS A QUIET NEW ENGLAND SETTING NOT FAR FROM NEW HAVEN. WE HAVE OVER 1,500 SQUARE FT OF SPACE WHICH INCLUDES A BATHING/DRYING ROOM COMPLETE WITH ONLY THE MOST MODERN EQUIPMENT. OUR CLASSROOM AREA IS COMPLETE WITH NINE COMPLETELY SEPARATE AND FULLY EQUIPPED GROOMING STATIONS. EACH STUDENT WILL BE ASSIGNED THEIR OWN STATION.

STUDENT CONDUCT/TERMINATION/ATTENDANCE POLICY

THE PROGRAM DIRECTOR RESERVES THE RIGHT TO DISMISS ANY STUDENT WHOSE CONDUCT IS DEEMED TO BE UNSATISFACTORY. UNSATISFACTORY CONDUCT MAY BE THEFT, FAILURE TO ABIDE BY SCHOOL REGULATIONS, ASSAULT UPON ANOTHER STUDENT OR A STAFF MEMBER, DESTRUCTION OF PROPERTY, INSUBORDINATION TO A FACULTY OR STAFF MEMBER, OR THE DISRUPTION OF CLASSES OR ACTIVITIES. STUDENTS WHO ARE FOUND IN POSSESSION OF, OR UNDER THE INFLUENCE OF DRUGS OR ALCOHOL ON SCHOOL PREMISES, WILL BE IMMEDIATELY DISMISSED. THE SCHOOL RESERVES THE RIGHT TO TERMINATE ANY STUDENT UPON DETERMINATION THAT THE STUDENT IS NOT COMPLYING WITH SCHOOL CONDUCT POLICIES. A STUDENT WHO HAS BEEN DISMISSED FOR UNSATISFACTORY CONDUCT MAY BE CONSIDERED FOR READMISSION, ON PROBATION, AT THE DISCRETION OF THE SCHOOL DIRECTOR. A STUDENT ON PROBATION IS SUBJECT TO IMMEDIATE DISMISSAL IF HE OR SHE ENGAGES IN ANY UNSATISFACTORY CONDUCT, AS DETERMINED BY THE DIRECTOR. TUITION REFUNDS IN CASES OF TERMINATION WILL BE ACCORDING TO THE COURSE WITHDRAWAL AND REFUND POLICY. STUDENTS MUST ATTEND ALL CLASSES. MISSED CLASSES MUST BE MADE UP BEFORE A STUDENT MAY GRADUATE. IF A STUDENT HAS MORE THAN 4 UNEXCUSED ABSENCES, OR MORE THAN 8 TOTAL ABSENCES, HE OR SHE WILL BE DISMISSED WITH NO REFUND DUE. IN ORDER FOR AN ABSENCE TO BE EXCUSED, THE STUDENT MUST CALL AT LEAST ONE HOUR BEFORE CLASS STARTS.

GRADING POLICY

A STUDENT MUST PASS EACH EXAM WITH A MINIMUM GRADE OF 70%. A STUDENT MUST COMPLETE THE PROGRAM WITH A 70% AVERAGE AND SUCCESSFULLY PASS THE GROOMING EVALUATION SKILLS TEST. 90%-100% = A, 80%-90% = B, 70%-80% = C, BELOW 70% = F OR FAILING. STUDENTS WILL BE GIVEN A PROGRESS REPORT UPON COMPLETION OF 150 HOURS. AT 300 HOURS, STUDENTS WILL BE GIVEN HIS OR HER TRANSCRIPT, CONTAINING THE FINAL GRADE.

STUDENT COMPLAINT POLICY

STUDENTS MAY MAKE COMPLAINTS AGAINST THE SCHOOL. ALL COMPLAINTS MUST BE IN WRITTEN FORM, SIGNED & FILED WITH THE SCHOOL OWNER. A SCHOOL REPRESENTATIVE WILL MEET WITH THE STUDENT WITHIN 10 DAYS. IF THE COMPLAINT CANNOT BE RESOLVED THROUGH DISCUSSION, THE STUDENT WILL BE REFERRED TO THE CT DEPT OF HIGHER EDUCATION FOR PRIVATE OCCUPATIONAL SCHOOLS, 61 WOODLAND ST HARTFORD CT 06105. 860 947-1816

GRADUATION POLICY

IN ORDER TO BE RECOMMENDED FOR GRADUATION, STUDENTS MUST SUCCESSFULLY COMPLETE: THE ACADEMIC PORTION OF THE PROGRAM WITH A GRADE OF 70%. STUDENTS MUST ATTEND ALL CLASSES AND MAKE UP ANY MISSED CLASSES. SUCCESSFULLY COMPLETE A FINAL EVALUATION CONSISTING OF A WRITTEN EXAM AND DEMONSTRATION OF SELECTED SKILLS. UPON A SUCCESSFUL COMPLETION OF THE PROGRAM, WE AGREE TO AWARD YOU A CERTIFICATE OF GRADUATION, VALIDATING SATISFACTORY COMPLETION OF THE PROGRAM.

CIVIL RIGHTS STATEMENT OF NON-DISCRIMINATION

CONNECTICUT SCHOOL OF DOG GROOMING DOES NOT DISCRIMINATE ON THE BASIS OF RACE, COLOR, NATIONAL ORIGIN, AGE, SEX, RELIGION, OR HANDICAP IN ADMISSION TO, ACCESS TO, TREATMENT IN OR EMPLOYMENT IN ITS PROGRAMS AND ACTIVITIES. JENNY AURORA, OWNER/DIRECTOR, HAS BEEN DESIGNATED TO HANDLE INQUIRIES REGARDING THESE POLICIES. INQUIRIES CONCERNING THE APPLICATION OF THESE POLICIES MAY BE DIRECTED TO: REGIONAL DIRECTOR, OFFICE OF CIVIL RIGHTS, U.S. DEPT. OF ED. J.W. MCCORMACK POCH, ROOM 222, BOSTON, MA 02109-4557

CONNECTICUT SCHOOL OF DOG GROOMING

CAREER COURSE IN DOG GROOMING

200 HOURS

APPLICATION FEE \$200.00 TUITION \$4,500.00
 BOOKS, PROFESSIONAL EQUIPMENT KIT & SUPPLIES \$1,450.00
 TAX \$87.00 — TOTAL WITH TAX \$6,237.00
 PAYMENT MAY BE MADE BY CASH, CHECK, OR CREDIT CARD

SCHOOL HOURS
 DAYS _____ TUESDAY-FRIDAY 9:30—5:00* (7.14 WEEKS)
 SATURDAYS _____ 9:30—5:30* (26.67 WEEKS)
 *INCLUDING BREAKS & 1/2 HOUR LUNCH

INTRODUCTION TO DOG GROOMING

A. BREED RECOGNITION (4 HOURS)

1. GROUP CLASSIFICATION
 - 1A. SPORTING GROUP
 - 1B. HOUND GROUP
 - 1C. WORKING GROUP
 - 1D. TOY GROUP
 - 1E. HERDING GROUP
 - 1F. NON-SPORTING GROUP
2. CHARACTERISTICS OF EACH GROUP
 - 2A. BREED STRENGTHS/WEAKNESSES
 - 2B. PHYSICAL TRAITS
 - 2C. PERSONALITY TRAITS



B. BEHAVIORAL THERAPY (25 HOURS)

1. HANDLING/CONTROL
 - A. "RECEIVING" A DOG (WELCOME, APPROACH)
 - B. PLACE & SECURE DOG ON GROOMING TABLE
 - C. INITIATING GROOMING
 - 1C. DETERMINING LEVEL OF AGGRESSION
 - 2C. MUZZLE REQUIREMENTS IF NECESSARY
 - 3C. ASSESSING DOG BODY LANGUAGE (IE: FACIAL EXPRESSION MUSCLE TENSION, TEETH SHOWING, GROWLING/WHINING)
 - 4C. BITE PREVENTION TECHNIQUES
 - 5C. KENNEL SHYNESS - HOW TO HANDLE



USE AND CARE OF EQUIPMENT

A. INTRODUCTION TO GROOMING TOOLS (1 HOURS)

1. ELECTRIC HAIR CLIPPERS
2. COMBS (SNAP ON, FLEA AND STYLING)
3. NAIL CLIPPERS
4. CLIPPER BLADES
5. SCISSORS
6. SLICKERS
7. DE-MATTERS
8. EAR POWDER & KWIK STOP
9. FURMINATOR
10. REFERENCE TEXTBOOK: *NOTES FROM THE GROOMING TABLE*





JENNY WITH HER FORMER BOSS, SAM KOHL, FOUNDER OF THE FIRST DOG GROOMING SCHOOL IN AMERICA, *NEW YORK SCHOOL OF DOG GROOMING*.

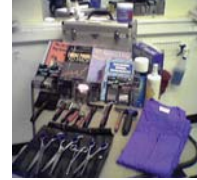
GROOMING THEIR CLIENTS



NIGHT CLASS POSES FOR THE LOCAL NEWSPAPER

B. SANITATION/STERILIZATION OF EQUIPMENT (1 HOUR)

1. IMPORTANCE OF CLEAN EQUIPMENT
 - A. PREVENTION OF PARASITE TRANSFERENCE
 - B. PROLONGS LENGTH OF EQUIPMENT LIFE
2. STERILIZATION PRODUCTS
 - A. BARBICIDE DISINFECTANT FUNGICIDE & VERMICIDE
 - B. KOOL-LUBE(OSTER) COOLANT, LUBRICANT, AND CLEANER FOR CLIPPER BLADES
3. DEMONSTRATION OF EQUIPMENT MAINTENANCE
 - A. SCISSOR CARE
 - B. COMBS/BLADES
 - C. CLIPPER BLADES



BATHING & GROOMING TECHNIQUES

A. THE BASICS (20 HOURS)

1. SHAVE SANITARY AREA
 - RECTUM
 - STOMACH
2. EARS- HAIR REMOVAL
 - ASSESSMENT OF EAR CONDITION (IE: INFECTED OR NOT)
 - PROPER USE OF EAR CLEANSERS AND POWDERS
 - HAIR REMOVAL
3. PADS- SHAVE HAIR BETWEEN PADS OF FEET
4. NAILS- CLIP NAILS WITH PROPER NAIL CLIPPER
 - HOW OFTEN
 - SIDE EFFECTS OF NAIL NEGLECT
 - DEMONSTRATION OF NAIL CLIPPING
5. BRUSHING AND DEMATTING TECHNIQUES
 - IMPORTANCE OF PROPER BRUSHING
 - AVOIDANCE OF BRUSH BURNS
 - PROPER TECHNIQUES



B. ROUGH CUT (15 HOURS)

1. PRE-CUT IN ACCORDANCE TO BREED



C. BATHING (1 HOUR)

1. ASSESSMENT OF SHAMPOO
2. BATHING SYSTEM

D. DRYING (1 HOUR)

1. TECHNIQUES
 - BREED APPROPRIATE DRYING METHODS
 - CAGE DRYING
 - FORCE DRYING
2. DOS AND DON'TS OF DRYING



**CONNECTICUT SCHOOL OF DOG GROOMING LAUNCHES
“MOBILE GROOMING TRAINING”**

AS PART OF THEIR 200 HOUR, “CAREER COURSE IN DOG GROOMING”, EACH STUDENT WILL BE GIVEN THE OPPORTUNITY TO EXPERIENCE THE FUN OF LEARNING IN OUR STATE OF THE ART MOBILE GROOMING VAN, “THE DOGFATHER”. THIS IS AN ACTUAL MOBILE GROOMING BUSINESS, OPERATING IN THE SOUTHERN CONNECTICUT MARKETPLACE, EXCLUSIVELY FOR THE TRAINING OF OUR STUDENTS. THOSE WHO INTEND TO GO INTO THE MOBILE GROOMING PROFESSION MAY SPEND UP TO 20% OF THEIR SCHOOL HOURS WORKING AND LEARNING, “ON THE ROAD.” MOBILE GROOMING TRAINING WILL CONSIST OF STUDENTS SPENDING THEIR SCHOOL DAY VISITING ACTUAL CUSTOMERS AND GROOMING THEIR DOGS RIGHT IN THEIR DRIVEWAY, WITH A QUALIFIED MOBILE GROOMING INSTRUCTOR, IN A UNIQUE 1-ON-1 LEARNING ATMOSPHERE, UNEQUALED ANYWHERE



THE *WAG-N-TAILS* VAN IS TOTALLY SELF-CONTAINED WITH ITS OWN POWER, HEAT, AIR CONDITIONING, & CLEAN WATER FOR BATHING. THE UNIT IS OUTFITTED WITH THE LATEST GROOMING EQUIPMENT INCLUDING STAINLESS STEEL BATHING TUB, ELECTRIC GROOMING TABLE, & HIGH SPEED MOBILE GROOMING DRYERS. THE STUDENT WILL LEARN ALL PHASES OF MOBILE GROOMING, INCLUDING THE INSPECTION OF THE CUSTOMER’S DOG, THE PRICING OF THE SERVICE, BATHING, DRYING, CLIPPING, SCISSORING, MOBILE SHORTCUTS AND TECHNIQUES, RETURNING THE DOG TO HIS OWNER, & OPERATING AND CARING FOR THE MOBILE GROOMING UNIT ITSELF.

- E. **FINAL CUT (45 HOURS)**
 - 1. FINISHING CUT, BREED APPROPRIATE
 - 2. FINISHING TECHNIQUES
 - BOWS AND BANDANAS
 - COLOGNE



- F. **SCISSOR/CLIPPER BASICS (13 HOURS)**
 - 1. DOS AND DON'TS
 - 2. BLENDING
 - 3. CAMOUFLAGING IMPERFECTIONS
 - 4. SCISSORING TO BODY CONTOURS

- G. **IDENTIFICATION OF SKIN DISORDER (2 HOURS)**
 - 1. EXAM
 - 2. HOT SPOTS
 - 3. MANGE
 - 4. PARASITES(IE: FLEAS, TICKS)
 - SPOTTING: HOW TO AND WHERE TO LOOK ON THE DOG
 - PROPER PROCEDURE FOR ELIMINATION
 - PREVENTION
 - SHAMPOOS, COLLARS, MEDICATION



- H. **FINAL GROOMING EVALUATION AND TEST (7 HOURS)**
 - 1. FINAL STEP BY STEP EVALUATION OF GROOMING COMPETENCE
 - 1A. STUDENT WILL BE ASKED TO GROOM A DOG ON THEIR OWN FROM START TO FINISH AND BE EVALUATED FOR EACH STEP OF THE PROCESS OF GROOMING THAT INDIVIDUAL DOG.

- I. **BASIC FIRST AID FOR DOGS (1 HOUR)**
 - 1. RESCUE BREATHING (MOUTH TO NOSE)
 - 2. STOP BLEEDING FOR NAILS AND MINOR CUTS
 - 3. SIGNS OF STRESS IN A DOG
 - 4. OPTIONAL CERTIFICATION CLASS

SPEED GROOMING

- A. SKIMMING TECHNIQUES (3 HOURS)
- B. SNAP-ON COMBS (3 HOURS)
- C. SCISSOR SHORTCUTS (3 HOURS)
- D. TIME SAVING EQUIPMENT (2 HOURS)



STYLING TECHNIQUES

- A. MULTIPLE HAIRCUTS PER BREED (3 HOURS)
- B. BLENDING (3 HOURS)
- C. CAMOUFLAGING (2 HOURS)
- D. HIDING FLAWS IN BREED CHARACTERISTICS (2 HOURS)

PROFESSIONAL SCISSORING

- A. SCISSORING TO BODY CONTOURS (5 HOURS)
- B. SHOW CLIPS (5 HOURS)



ADVANCED USE OF SNAP-ON COMBS

- A. HAIR LENGTH COMPARISON TO METAL BLADES (3 HOURS)
- B. SETTING HEIGHTS FOR FINAL SCISSORING (3 HOURS)
- C. ADVANTAGES & SAFETY FEATURES (2 HOURS)
- D. USING COMBS WITH CLIPPER-VAC SYSTEMS (2 HOURS)



MARKETING & BUSINESS SEMINAR FOR STUDENTS & GRADUATES



BIRDBRAIN



YANKEE POODLE



CHRIS FINISHES A BEDLINGTON



JENNY TRIMS LULU

BUSINESS MANAGEMENT/FIELD TRIP

VISIT TO SUCCESSFUL SHOPS IN CONNECTICUT

DURING THESE VISITS, WE WILL DISCUSS THE LAYOUT AND DESIGN OF VARIOUS SHOPS. ATTENTION WILL BE GIVEN TO PROFESSIONAL IMAGING, & ORGANIZATION OF SHOPS. PERMITS, LICENSING, & ZONING ISSUES WILL BE DISCUSSED. REAL WORLD EXPERIENCES WILL BE SHARED BY GRADUATES AND BUSINESS OWNERS. THE TOUR GUIDE AND MODERATOR WILL BE JENNY AURORA, THE SCHOOL DIRECTOR.

A. SETTING UP A BUSINESS (1 HOUR)

- 1 LOCATION
- 2 PRICING
- 3 FINANCES
- 4 EQUIPMENT PURCHASES
- 3 SUPPLY PURCHASES
- 6 VENDOR CHOICES



B. CITY & STATE REGULATIONS (1 HOUR)

- 1 LICENSING REQUIREMENTS
- 2 ZONING
- 3 PERMITS

C. MARKETING/ADVERTISING (1 HOUR)

- 1 MARKET AREA
- 2 DETERMINE CLIENTELE
- 3 MARKETING STRATEGIES
 - WORD OF MOUTH
 - FLIERS
 - YELLOW PAGES
 - INTERNET
 - SPECIAL EVENTS
 - NETWORKING
 - ADVERTISING
 - REFERRALS
 - PUBLICATIONS
 - WEBSITE
 - NEWSLETTERS
 - COMMUNITY DOG EVENTS
 - LOCAL VETS



D. CLIENT RELATIONS (1 HOUR)

- 1 PROFESSIONAL IMAGING
- 2 SHOP ENVIRONMENT
- 3 CLIENT DATABASE

E. SHOP DESIGN (1 HOUR)

- 1 CREATING A THEME
- 2 WORK STATION DESIGN
- 3 WASH AREA
- 4 LOBBY





FUN AT WESTMINSTER



SMELL BEING SMELL



JOE SCISSORS COCKAPOO



OUR BOOTH AT INTERGROOM



PETE HAS BUILT A BOOMING MOBILE BUSINESS IN RHODE ISLAND

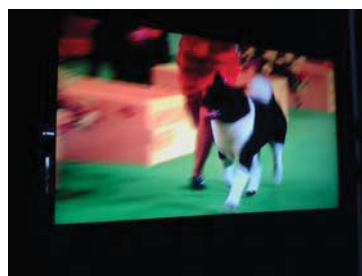
MOBILE GROOMING TRAINING (12 HOURS)

1. THE MOBILE SUCCESS FORMULA
2. MONEY MATTERS
3. VAN OR TRAILER
4. TELEPHONE CONSIDERATIONS
5. MOBILE ROUTE PLANNING
6. STATE & TOWN REGULATIONS
7. NAMING YOUR BUSINESS
8. MARKETING PLANS
9. VEHICLE GRAPHICS
10. SPECIAL MOBILE EQUIPMENT
11. CARE & MAINTENANCE OF GROOMING VEHICLE
12. THE MOBILE GROOMING WEBSITE
13. MOBILE GROOMING PRICING
14. MAKING MOBILE APPOINTMENTS



CLASSROOM VIDEOS (6 HRS) ON LARGE LCD TV'S

1. WESTMINSTER DOG SHOW VIDEOS
2. MOBILE GROOMING VANS VIDEO
3. FIRST AID VIDEO
4. AKC BREED I.D. SERIES VIDEO
5. BREED SPECIFIC STYLING VIDEOS
6. JOHN STAZKO SALON OWNER SERIES
7. JOHN STAZKO VIDEO LIBRARY
8. MOBILE GROOMING VANS VIDEO
9. ANIMAL PLANET
10. DOG SHOWS



LIZEL CAME TO OUR SCHOOL FROM SOUTH AFRICA

PROFESSIONAL GROOMING KIT

YOUR KIT WILL CONTAIN THE HIGHEST QUALITY PRECISION GROOMING INSTRUMENTS WHICH WILL LAST FOR YEARS. AS YOU PROGRESS THROUGHOUT YOUR CAREER, YOU WILL NOT NEED TO UPGRADE THESE TOOLS, AS THEY ARE ALREADY AMONG THE FINEST IN THE IDUSTRY

ROLLING TOTE PROFESSIONAL GROOMING CASE
ANDIS SUPER 2-SPEED ELECTRIC CLIPPERS
MOSER MINI CORDLESS ELECTRIC CLIPPER
10 BLADE 7F BLADE 30 BLADE 15 BLADE 5F BLADE
WAHL 8 PIECE STAINLESS STEEL SNAP-ON COMB KIT
GEIB SUPERGATOR 9-3/4" CURVED SCISSORS (PROFESSIONAL GROOMER'S PICK FOR SCISSORING LEGS, BODIES, AND HEADS)
GEIB SUPERGATOR 9-3/4" STRAIGHT SCISSORS (CORRUGATED, JAPANESE STYLE , USED FOR EXTRA-FINE VELVETY FINISH).
GEIB BLUEBREEZE PROFESSIONAL THINNING SHEARS (THE BEST IN THE INDUSTRY, USED FOR BLENDING AND FINISHING)

LEATHER SCISSOR CASE
SMALL NAIL CLIPPER
LARGE NAIL CLIPPER
POODLE COMB
SMALL SLICKER BRUSH
LARGE SLICKER BRUSH
T-RAKE
COMB
FLEA COMB
FURMINATOR DESHEDDING TOOL
SCHOOL LOGO GROOMING JACKET
HEMOSTAT
EAR POWDER
KWIK-STOP
KOOL-LUBE
FINISHING SPRAY
WHAM EAR TREATMENT
BLADE WASH
SUPER DEMATting TOOL
COAT KING 26 DOUBLE-WIDE THINNING TOOL
SMALL MAT SPLITTER



HERE IS AN EXAMPLE OF HOW OUR THINNING SHEARS AND PROFESSIONAL SCISSORS CAN TRANSFORM A DOG WITH THE HELP AND SKILL OF A WELL TRAINED GROOMER

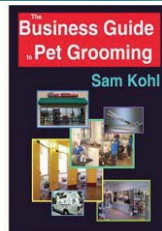
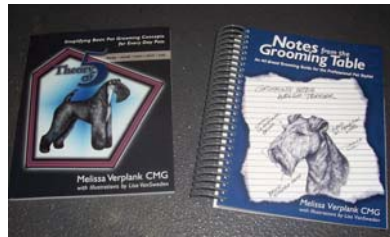


SCHOOL TEXTBOOKS:

[NOTES FROM THE GROOMING TABLE](#)—MELISSA VERPLANK

[THE BUSINESS GUIDE TO PET GROOMING](#)—SAM KOHL

[THEORY OF FIVE](#)—MELISSA VERPLANK





RICH MILLER, OUR VERY FIRST GRADUATE



MARINA BAGLIORE OPENED HER OWN PET SALON SHORTLY AFTER GRADUATION



VERONICA TREMBICKI OPENED HER OWN MOBILE GROOMING BUSINESS

BACKGROUND INFORMATION

NAME OF LAST HIGH SCHOOL ATTENDED _____

DID YOU GRADUATE? _____ WHAT YEAR? _____ GED? _____

CURRENT EMPLOYER _____ WORK PHONE _____

SPOUSES NAME _____ WORK PHONE _____

MEDICAL HISTORY	YES	NO	
ALLERGIES	___	___	WHICH? _____
DIABETES	___	___	
EPILEPSY	___	___	
HEART CONDITION	___	___	
IMPAIRED VISION	___	___	
PROSTHETIC DEVICES	___	___	WHICH _____

ARE YOU ON MEDICATION? _____ PLEASE LIST _____

WILL YOU BE SCISSORING LEFT HANDED (),
OR RIGHT HANDED ()

PREVIOUS GROOMING EXPERIENCE? ()YES ()NO

IF YES, GIVE
DETAILS _____

DO YOU OWN A DOG? _____ WHAT KIND(S) _____

SIGNATURE

DATE



LINDA FERRARO OPENED HER MOBILE BUSINESS WITH A CUSTOM VAN



JILL STARTED HER MOBILE BUSINESS IN 2003 IN THE PANHANDLE OF FLORIDA

EMAIL FROM JILL BELOW WAS RECEIVED DECEMBER 14, 2006

Jenny,
 Tail waggins from Florida. I wanted to wish you a Merry Christmas and Happy New Year. Also my continued thanks for teaching me to groom (Sept 2003 day class). I am purchasing my second van after only 3 years in business. This time I'm going with a Wag'n Tails! Thank you again and hopefully I will get to the show in PA this coming year!! You look fantastic!!

Jill



117 WASHINGTON AVENUE
NORTH HAVEN, CT 06473
(203) 234-1116
www.learn2groom.com



**CSDG GRAD MARK IS THRILLED
WITH HIS NEW MOBILE
GROOMING VAN, DOG STYLING**